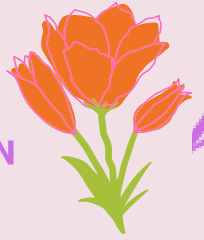




YEARLY PLANNER



GRANT THEE ACCORDING TO THINE OWN
HEART, AND FULFIL ALL THY COUNSEL.
PSALM 20:4

JANUARY

FEBRUARY

MARCH

APRIL

MAY

JUNE

JULY

AUGUST

SEPTEMBER

OCTOBER

NOVEMBER

DECEMBER